

KRAZATI[®]
(adagrasib) | 200 mg
TABLETS

IN KRAS G12C-POSITIVE ADVANCED CRC

This is my TIME TO TARGET WHAT MATTERS

» You have had prior therapy for advanced colorectal cancer (CRC). This is your guide to understanding KRAZATI combination therapy, what to expect on treatment, and support that may help you along the way.

Not an actual patient.

KRAZATI + cetuximab combination therapy is a chemo-free, targeted treatment option for your KRAS G12C-positive advanced CRC.

+ For additional information and resources, visit www.KRAZATI.com/c

for
KRAS G12C-positive
advanced
CRC



What is KRAZATI?

KRAZATI is a prescription medicine used in adults:

- in combination with a medicine called cetuximab to treat colon or rectal cancer (CRC)
 - that has spread to other parts of the body or cannot be removed by surgery, **and**
 - whose tumor has an abnormal KRAS G12C gene, **and**
 - who have previously received certain chemotherapy medicines.

Your healthcare provider will perform a test to make sure that KRAZATI is right for you.

It is not known if KRAZATI is safe and effective in children.

SELECT IMPORTANT SAFETY INFORMATION

KRAZATI can cause serious side effects, including stomach and intestinal (gastrointestinal) problems, changes in the electrical activity of your heart called QTc prolongation, liver problems, and lung or breathing problems.

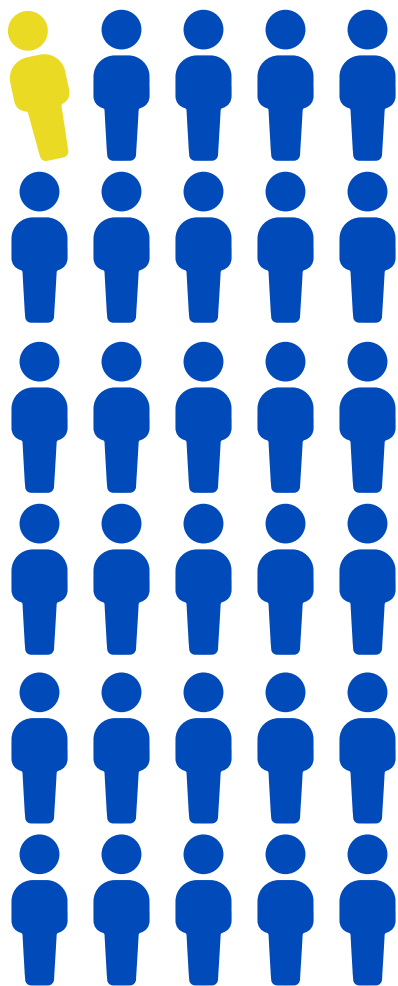
Please read the Full Important Safety Information on pages 8-9 and please see the Full Prescribing Information, including Patient Information.

about

KRAZATI[®]
(adagrasib) | 200 mg
TABLETS

KRAS G12C IN CRC

KRAS mutations are among the most common mutations found in CRC, and about 1 in 30 people with CRC have the KRAS G12C mutation.



CELL MUTATIONS CAN LEAD TO THE DEVELOPMENT OF CRC

People with cancer can have changes to one or more genes in a cell that cause it to not work properly. These mutations lead to abnormal growth of cells.

The growth and development of cells can be controlled by genes like *KRAS*. When it is mutated, this can set off a domino effect that can lead to cancer. The *KRAS G12C* mutation is one of many mutations that may be found in CRC.

YOUR CANCER MAY HAVE BIOMARKERS THAT CAN BE IDENTIFIED THROUGH TESTING

Knowing your mutation status can help your doctor find the best treatment approach for you. Ask your doctor to test for *KRAS G12C* to determine your mutation status. Your doctor may have already tested you when you were first diagnosed and can look back to check for *KRAS G12C*.

KRAZATI + cetuximab combination therapy is a chemo-free, targeted treatment option for your *KRAS G12C*-positive advanced CRC after treatment with certain chemotherapy medicines. It is designed to target *KRAS G12C* in order to help suppress tumor growth.

CRC=colorectal cancer.

SELECT IMPORTANT SAFETY INFORMATION

Before taking KRAZATI, tell your healthcare provider about all of your medical conditions, including if you:

- have any heart problems, including heart failure and congenital long QT syndrome
- have liver problems
- are pregnant or plan to become pregnant. It is not known if KRAZATI can harm your unborn baby
- are breastfeeding or plan to breastfeed. It is not known if KRAZATI passes into your breastmilk. Do not breastfeed during treatment and for 1 week after your last dose of KRAZATI

Tell your healthcare provider about all the medicines you take, including prescription and over-the-counter medicines, vitamins, and herbal supplements. KRAZATI can affect the way other medicines work, and other medicines can affect how KRAZATI works.

Please read the Full Important Safety Information on pages 8-9 and please see the [Full Prescribing Information](#), including [Patient Information](#).

WERE THE CLINICAL STUDY RESULTS?

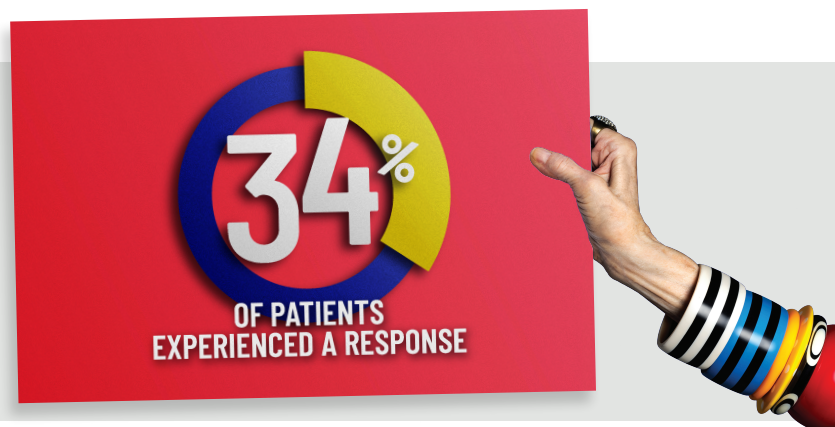
KRAZATI was tested in combination with cetuximab in a clinical trial of 94 adults with *KRAS G12C*-positive advanced CRC who previously received certain chemotherapy medicines. The trial evaluated how many people responded to KRAZATI + cetuximab and how long their tumors responded to treatment.

34% saw tumors shrink

(Objective response rate)

Based on 94 people, 32 people saw a decrease in tumor size.

No person saw their tumors disappear completely.



How long did the tumors respond to treatment?

(Duration of response)

Of those people (n=32) whose tumors responded to treatment, the median duration of response was **5.8 months**. Experiences with KRAZATI vary, speak with your doctor for more information.



CRC=colorectal cancer.

SELECT IMPORTANT SAFETY INFORMATION

KRAZATI can cause serious side effects, including:

- **Stomach and intestinal (gastrointestinal) problems.** Stomach and intestinal side effects including nausea, diarrhea, or vomiting, are common with KRAZATI but can also sometimes be severe. KRAZATI can also cause serious stomach and intestinal side effects such as bleeding, obstruction, inflammation of the colon (colitis), and narrowing (stenosis)
- **Call your healthcare provider if you develop any of the signs or symptoms of stomach or intestinal problems listed above during treatment with KRAZATI**
- Your healthcare provider may prescribe an antidiarrheal medicine or anti-nausea medicine, or other treatment, as needed

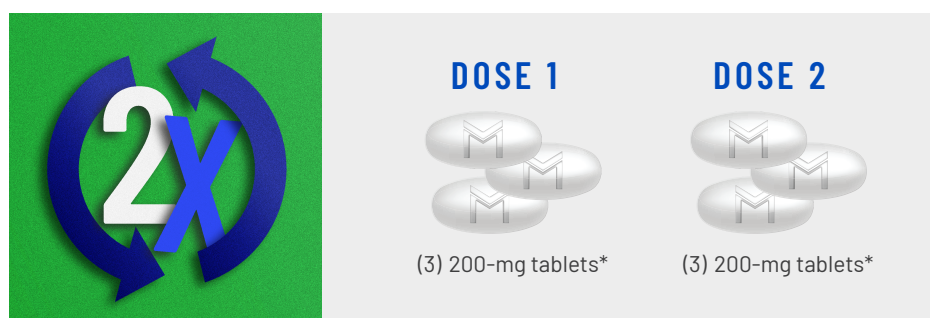
Please read the **Full Important Safety Information** on pages 8-9 and please see the **Full Prescribing Information**, including **Patient Information**.

SHOULD I TAKE KRAZATI + CETUXIMAB?

KRAZATI is a 600-mg, twice-daily, chemo-free, targeted oral medication that is taken with cetuximab, an infusion therapy.



KRAZATI RECOMMENDED DOSAGE: 600 MG TWICE DAILY



*Tablets not actual size.

Take KRAZATI exactly as your doctor tells you to take it.

- Take your prescribed dose of KRAZATI **2 times each day**, at the same time each day, either with or without food
- **Swallow KRAZATI tablets whole.** Do not chew, crush, or split tablets
- Your doctor may change your dose, or temporarily or permanently stop treatment with KRAZATI if you develop certain side effects
- Do not change your dose or stop taking KRAZATI unless your doctor tells you to
- Your doctor will permanently or temporarily stop your treatment with cetuximab if your treatment with KRAZATI is permanently or temporarily stopped
- If you vomit after taking a dose of KRAZATI, do not take an extra dose. Take your next dose at your next scheduled time

IF YOU MISS A DOSE OF KRAZATI:

Take it as soon as you remember. **If it has been more than 4 hours:**

- Do not take the dose; take your next dose at your next scheduled time
- Do not take 2 doses of KRAZATI at the same time to make up for a missed dose

**YOUR CETUXIMAB INFUSION WILL BE ADMINISTERED BY YOUR DOCTOR.
TALK TO YOUR DOCTOR ABOUT YOUR CETUXIMAB THERAPY.**

Please read the Full Important Safety Information on pages 8-9 and please see the [Full Prescribing Information](#), including [Patient Information](#).

ARE THE POSSIBLE SIDE EFFECTS OF KRAZATI + CETUXIMAB?

KRAZATI can cause serious side effects.

Stomach and intestinal (gastrointestinal) problems: Nausea, diarrhea, or vomiting are common with KRAZATI but can also sometimes be severe. KRAZATI can also cause serious stomach and intestinal side effects such as bleeding, obstruction, inflammation of the colon (colitis), and narrowing (stenosis). **Call your healthcare provider if you develop any of the signs or symptoms of stomach or intestinal problems listed above during treatment with KRAZATI.** Your healthcare provider may prescribe an antidiarrheal medicine or anti-nausea medicine, or other treatment, as needed.

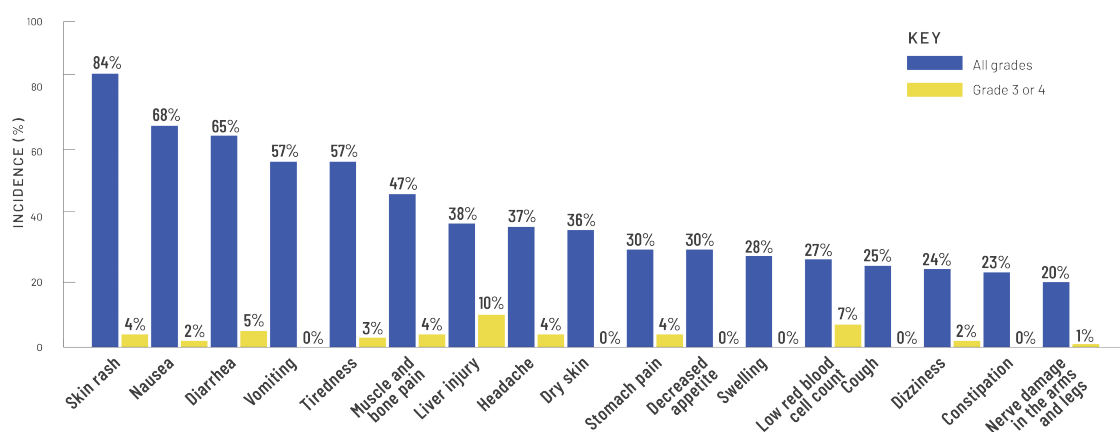
Changes in the electrical activity of your heart (called QTc prolongation): Certain changes can occur in the electrical activity of your heart during treatment with KRAZATI. QTc prolongation can increase your risk for irregular heartbeats that can be life-threatening and can lead to sudden death. You should not take KRAZATI if you have congenital long QT syndrome or if you currently have QTc prolongation. **Tell your healthcare provider if you feel dizzy, lightheaded, or faint, or if you get abnormal heartbeats during treatment with KRAZATI.**

Liver problems: Abnormal liver blood test results are common with KRAZATI and can sometimes be severe. Tell your healthcare provider right away if you develop any signs or symptoms of liver problems, including: jaundice (your skin or white part of your eyes turns yellow), dark or “tea-colored” urine, light-colored stools, tiredness or weakness, nausea or vomiting, bleeding or bruising, loss of appetite, pain, aching or tenderness on the right side of your stomach area.

Lung or breathing problems: KRAZATI may cause inflammation of the lungs that can lead to death. Tell your healthcare provider or get emergency medical help right away if you have new or worsening shortness of breath, cough, or fever.

➤ **SEE TIPS FOR MANAGING SIDE EFFECTS ON PAGE 6.**

The most common side effects (≥20%) of combination treatment with KRAZATI + cetuximab (N=94)



➤ **LISTEN TO YOUR BODY, LISTEN TO YOURSELF. IF YOU EXPERIENCE ANY SIDE EFFECTS, IT'S IMPORTANT TO TALK TO YOUR HEALTHCARE PROVIDER RIGHT AWAY.**

These are not all the possible side effects of KRAZATI. Call your doctor for medical advice about side effects. You may report side effects to the FDA at 1-800-FDA-1088. You may also report side effects at 1-844-647-2841.

Please read the Full Important Safety Information on pages 8-9 and please see the [Full Prescribing Information](#), including [Patient Information](#).

what

KRAZATI[®]
(adagrasib) | 200 mg
TABLETS

ARE SOME TIPS FOR MANAGING SIDE EFFECTS ON KRAZATI?



Not an actual patient.

DIARRHEA

- Drinking fluids may help you stay hydrated
- Eating smaller meals with foods that might be easy on your stomach, such as those high in potassium and sodium, may help replace what your body has lost
- Discuss possible treatments for this symptom with your doctor

NAUSEA AND VOMITING

- Drink plenty of fluids—water and clear liquids
- Eat smaller, more frequent meals. Nausea may be worse on an empty stomach
- Pay attention to which foods bother your stomach and try to avoid them (eg, greasy, fried, sweet, or spicy foods)
- Talk to your doctor about taking anti-nausea medicine

TIREDNESS/FATIGUE

- Track your energy level throughout the day, and have it on hand to discuss with your doctor
- Balance rest and activity, prioritizing your most necessary activities for when you may have the most energy
- Staying hydrated and eating foods high in protein may increase your energy levels
- If feelings/emotions are disturbing your sleep, talk to your doctor about a referral to a specialist

**➤ FOR MANAGING SIDE EFFECTS THAT CAN
RESULT FROM CETUXIMAB, SUCH AS SKIN
RASHES, PLEASE TALK TO YOUR DOCTOR.**

The tips provided here are for informational purposes only and are not meant to replace a physician's medical advice. Please contact your healthcare team if you are experiencing these side effects and ask your doctor if these tips may be right for you.

Please read the Full Important Safety Information on pages 8-9 and please see the [Full Prescribing Information](#), including [Patient Information](#).

what

KRAZATI[®]
(adagrasib) | 200 mg
TABLETS

SUPPORT CAN I RECEIVE WHILE TAKING KRAZATI?

At BMS, we provide support with purpose.

BMS Access Support provides resources to help patients understand their insurance coverage, offers educational materials to support patients throughout their treatment journey, and provides information on financial support options, including co-pay assistance for eligible commercially-insured patients. For more information, ask your doctor, visit [BMS Access Support](#), or call BMS Access Support at **1-800-861-0048**, 8 AM to 8 PM ET, Monday – Friday.

Please read the Full Important Safety Information on pages 8-9 and please see the [Full Prescribing Information](#), including [Patient Information](#).

USE AND IMPORTANT SAFETY INFORMATION

What is KRAZATI?

KRAZATI is a prescription medicine used in adults:

- in combination with a medicine called cetuximab to treat colon or rectal cancer (CRC)
 - that has spread to other parts of the body or cannot be removed by surgery, **and**
 - whose tumor has an abnormal KRAS G12C gene, **and**
 - who have previously received certain chemotherapy medicines.

Your healthcare provider will perform a test to make sure that KRAZATI is right for you.

It is not known if KRAZATI is safe and effective in children.

IMPORTANT SAFETY INFORMATION

Before taking KRAZATI, tell your healthcare provider about all of your medical conditions, including if you:

- have any heart problems, including heart failure and congenital long QT syndrome
- have liver problems
- are pregnant or plan to become pregnant. It is not known if KRAZATI can harm your unborn baby
- are breastfeeding or plan to breastfeed. It is not known if KRAZATI passes into your breastmilk. Do not breastfeed during treatment and for 1 week after your last dose of KRAZATI

Tell your healthcare provider about all the medicines you take, including prescription and over-the-counter medicines, vitamins, and herbal supplements. KRAZATI can affect the way other medicines work, and other medicines can affect how KRAZATI works.

KRAZATI can cause serious side effects, including:

- **Stomach and intestinal (gastrointestinal) problems.** Stomach and intestinal side effects including nausea, diarrhea, or vomiting, are common with KRAZATI but can also sometimes be severe. KRAZATI can also cause serious stomach and intestinal side effects such as bleeding, obstruction, inflammation of the colon (colitis), and narrowing (stenosis)
 - **Call your healthcare provider if you develop any of the signs or symptoms of stomach or intestinal problems listed above during treatment with KRAZATI**
 - Your healthcare provider may prescribe an antidiarrheal medicine or anti-nausea medicine, or other treatment, as needed
- **Changes in the electrical activity of your heart called QTc prolongation.** Certain changes can occur in the electrical activity of your heart during treatment with KRAZATI, and can be seen on a test called an electrocardiogram (ECG or EKG). QTc prolongation can increase your risk for irregular heartbeats that can be life-threatening, such as torsades de pointes, and can lead to sudden death
 - You should not take KRAZATI if you have congenital long QT syndrome or if you currently have QTc prolongation. See **"Before taking KRAZATI, tell your healthcare provider about all of your medical conditions, including if you:"**
 - Your healthcare provider should monitor the electrical activity of your heart and the levels of body salts in your blood (electrolytes) especially potassium and magnesium before starting and during treatment with KRAZATI if you have heart failure, a slow heart rate, abnormal levels of electrolytes in your blood, or if you take a medicine that can prolong the QT interval of your heartbeat
 - **Tell your healthcare provider if you feel dizzy, lightheaded, or faint, or if you get abnormal heartbeats during treatment with KRAZATI**
- **Liver problems.** Abnormal liver blood test results are common with KRAZATI and can sometimes be severe. Your healthcare provider should do blood tests before starting and during treatment with KRAZATI to check your liver function. Tell your healthcare provider right away if you develop any signs or symptoms of liver problems, including:
 - your skin or white part of your eyes turns yellow (jaundice), dark or "tea-colored" urine, light-colored stools (bowel movements), tiredness or weakness, nausea or vomiting, bleeding or bruising, loss of appetite, pain, aching, or tenderness on the right side of your stomach area (abdomen)
- **Lung or breathing problems.** KRAZATI may cause inflammation of the lungs that can lead to death. Tell your healthcare provider or get emergency medical help right away if you have new or worsening shortness of breath, cough, or fever

Please read the Full Important Safety Information on pages 8-9 and please see the [Full Prescribing Information, including Patient Information](#).

IMPORTANT SAFETY INFORMATION (CONTINUED)

The most common side effects

- The most common side effects when KRAZATI is used in combination with cetuximab for CRC include: skin rash, nausea, diarrhea, vomiting, tiredness, muscle and bone pain, headache, dry skin, stomach pain, decreased appetite, swelling, low red blood cell count, dizziness, constipation, nerve damage in the arms and legs

Certain abnormal blood test results are common during treatment with KRAZATI, when used alone or in combination with cetuximab. Your healthcare provider will monitor you for abnormal blood tests and treat you if needed.

KRAZATI may cause fertility problems in males and females, which may affect your ability to have children. Talk to your healthcare provider if this is a concern for you.

These are not all of the possible side effects of KRAZATI. Call your doctor for medical advice about side effects. You may report side effects to the FDA. Visit [fda.gov/medwatch](https://www.fda.gov/medwatch), or call 1-800-FDA-1088. You may also report side effects to 1-844-647-2841.

Please see the [Full Prescribing Information, including Patient Information](#).

References:

1. KRAZATI®. Prescribing information. Princeton, NJ. Mirati Therapeutics, Inc., a Bristol Myers Squibb company; 2024.
2. Meng M, Zhong K, Jiang T, Liu Z, Kwan HY, Su T. The current understanding on the impact of KRAS on colorectal cancer. *Biomed Pharmacother*. 2021;140:111717.
3. Nassar AH, Adib E, Kwiatkowski DJ. Distribution of *KRAS*^{G12C} somatic mutations across race, sex, and cancer type. *N Engl J Med*. 2021;384(2):185-187.
4. NCI dictionary of cancer terms. *National Cancer Institute*. Accessed February 23, 2022. <https://www.cancer.gov/publications/dictionaries/cancer-terms/def/mutation>
5. The genetics of cancer. *American Society of Clinical Oncology*. Accessed February 23, 2022. <https://www.cancer.net/navigating-cancer-care/cancer-basics/genetics/genetics-cancer>
6. Cox AD, Fesik SW, Kimmelman AC, Luo J, Der CJ. Drugging the undruggable Ras: mission possible? *Nat Rev Drug Discov*. 2014;13(11):828-851.
7. Haigis KM. KRAS alleles: the devil is in the detail. *Trends Cancer*. 2017;3(10):686-697.
8. Fernández-Medarde A, Santos E. Ras in cancer and developmental diseases. *Genes Cancer*. 2011;2(3):344-358.
9. Dey A, Mitra A, Pathak S, et al. Recent advancements, limitations, and future perspectives of the use of personalized medicine in treatment of colon cancer. *Technol Cancer Res Treat*. 2023;22:15330338231178403.
10. Diarrhea: cancer treatment side effect. *National Cancer Institute*. Updated September 24, 2021. Accessed October 27, 2022. <https://www.cancer.gov/about-cancer/treatment/side-effects/diarrhea>
11. Nausea and vomiting and cancer treatment - side effects. *National Cancer Institute*. Accessed October 27, 2022. <https://www.cancer.gov/about-cancer/treatment/side-effects/nausea-vomiting>
12. Fatigue and cancer treatment. *National Cancer Institute*. Updated September 23, 2021. Accessed October 27, 2022. <https://www.cancer.gov/about-cancer/treatment/side-effects/fatigue>

KRAZATI®

(adagrasib) | 200 mg
TABLETS

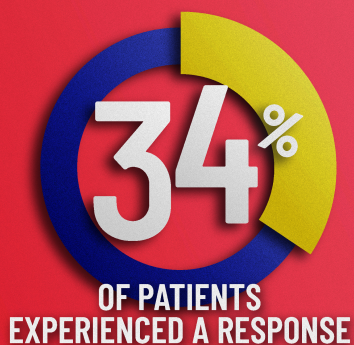
KRAZATI + CETUXIMAB

KRAZATI + cetuximab combination therapy is a chemo-free, targeted treatment option for adults with CRC that has spread to other parts of the body or cannot be removed by surgery, and whose tumor has an abnormal KRAS G12C gene, and who have previously received certain chemotherapy medicines.

Your healthcare provider will perform a test to make sure KRAZATI is right for you. It is not known if KRAZATI is safe and effective in children.



**TALK TO YOUR DOCTOR TO SEE IF KRAZATI + CETUXIMAB
COMBINATION THERAPY COULD BE RIGHT FOR YOU.**



34% saw tumors shrink

(Objective response rate)

Based on 94 people, 32 people saw a decrease in tumor size.

No person saw their tumors disappear completely.

The trial evaluated how many people responded to KRAZATI + cetuximab and how long their tumors responded to treatment.

+ For additional information and resources, visit www.KRAZATI.com/c

CRC=colorectal cancer.

SELECT IMPORTANT SAFETY INFORMATION

- KRAZATI can cause serious side effects, including stomach and intestinal (gastrointestinal) problems, changes in the electrical activity of your heart called QTc prolongation, liver problems, and lung or breathing problems

Please read the Full Important Safety Information on pages 8-9 and please see the [Full Prescribing Information](#), including [Patient Information](#).



© 2024 Mirati Therapeutics, Inc., a Bristol Myers Squibb company. Access Support is a trademark of Bristol-Myers Squibb Company. KRAZATI and the related logo are trademarks of Mirati Therapeutics, Inc. US-KRA-24-00099 v1 9/24